



DS Electric

TOTAL CATALOGUE

Magnetic Contactor
Electronic Overload Relay
Overload Relay
Circuit Breakers



Rating



MODEL			DM-9C	DM-12C	DM-18C	DM-22C	
Rating KS C 4504	3-phase squirrel cage motor	AC3-class	200/220V	2,2kW 11A	2,7kW 13A	3,7kW 18A	4kW 20A
			380/440V	2,7kW 7A	4kW 9A	5,5kW 13A	7,5kW 20A
			500/550V	2,7kW 6A	5,5kW 9A	5,5kW 13A	7,5kW 17A
		AC4-class	200/220V	1,5kW 8A	2,2kW 11A	3,7kW 18A	3,7kW 18A
			380/440V	2,2kW 6A	4kW 9A	4kW 9A	5,5kW 13A
			100V	0,4kW 11A	0,5kW 13A	0,75kW 18A	0,9kW 20A
	Single-phase motor	220V	0,8kW 11A	1kW 13A	1,5kW 18A	1,8kW 20A	
		Resistance load (DC1-class)	2-pole serial	110V	6A	10A	13A
	220V			3A	7A	8A	12A
	3-pole serial		110V	8A	12A	18A	20A
220V			8A	12A	18A	20A	
Thermal current AC 1 class (Ith)			25A	25A	40A	40A	
Endurance (x10,000 operations)			Electric	250	250	250	250
			Mechanical	2500	2500	2500	2500
Auxiliary Contact (standard)			1a1b	1a1b	1a1b	1a1b	
Auxiliary Contact (accessories)			Side-on	DsAU2			
Mounting			35mm DIN Rail or Holes for screw(M4) fixing				
External dimension (mm) (width x length x height)			44X80X86,7				
Installation size (mm) (width x length)			30~35X48~60/35X60				

Rating



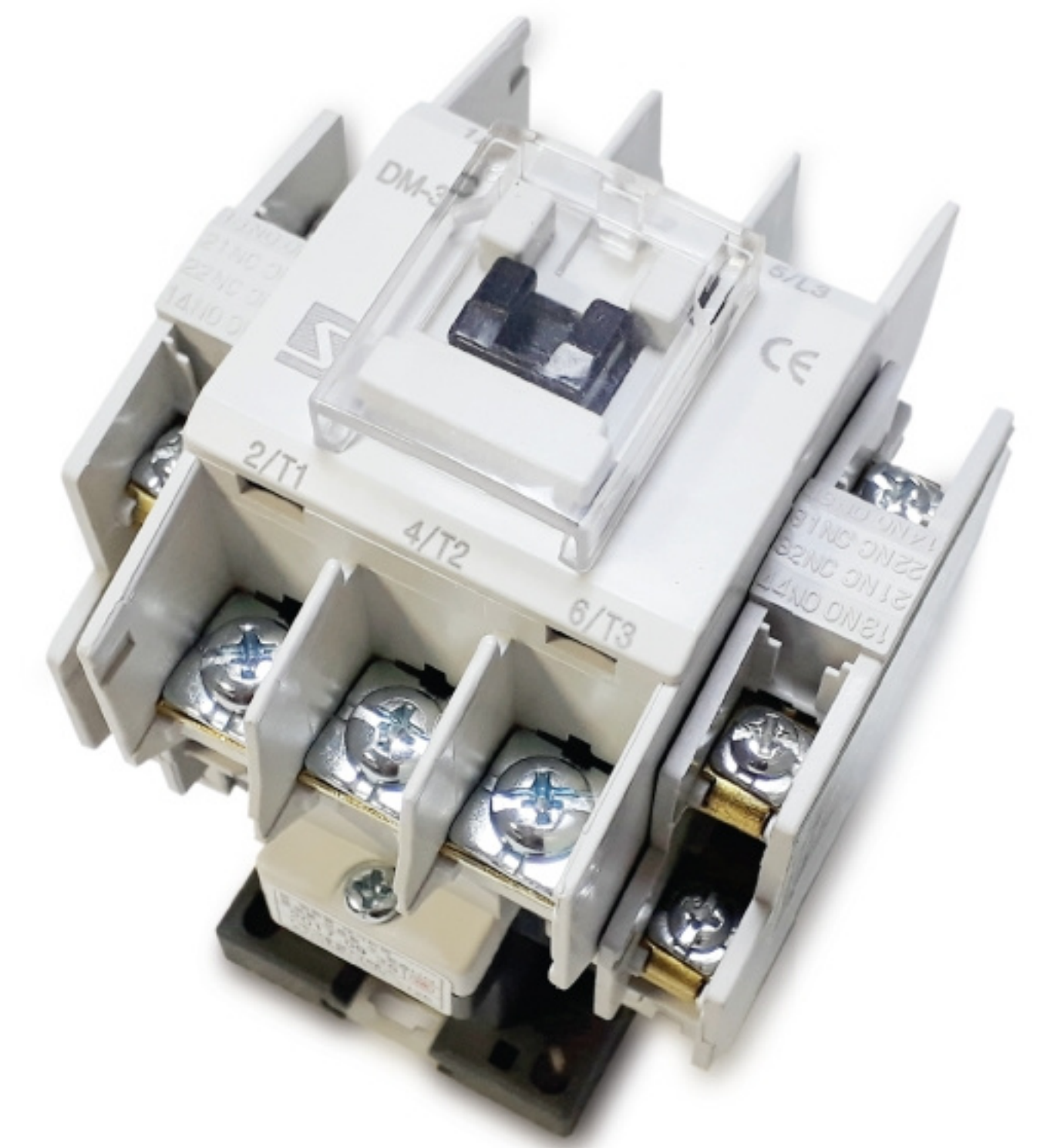
MODEL			DM-50C	DM-65C	DM-75C	DM-85C	
Rating KS C 4504	3-phase squirrel cage motor	AC3-class	200/220V	11kW 50A	15kW 65A	18,5kW 75A	19kW 80A
			380/440V	22kW 48A	30kW 65A	37kW 75A	37kW 80A
			500/550V	22kW 38A	37kW 60A	37kW 64A	45kW 75A
		AC4-class	200/220V	7,5kW 35A	11kW 50A	13kW 55A	15kW 65A
			380/440V	15kW 32A	22kW 47A	25kW 52A	30kW 62A
			100V	—	—	—	—
	Single-phase motor	220V	—	—	—	—	
		Resistance load (DC1-class)	2-pole serial	110V	35A	35A	50A
	220V			15A	15A	20A	20A
	3-pole serial		110V	50A	65A	70A	80A
220V			40A	50A	55A	60A	
Thermal current AC 1 class (Ith)			80A	100A	110A	135A	
Endurance (x10,000 operations)			Electric	150	150	150	150
			Mechanical	1000	1000	1000	1000
Auxiliary Contact (standard)			2a2b	2a2b	2a2b	2a2b	
Auxiliary Contact (accessories)			Side-on	DsAU2			
Mounting			35mm DIN Rail or Holes for screw(M4) fixing				
External dimension (mm) (width x length x height)			94X120X115,7				
Installation size (mm) (width x length)			50~60X100/60X95				

Magnetic Contactor

DS Electric

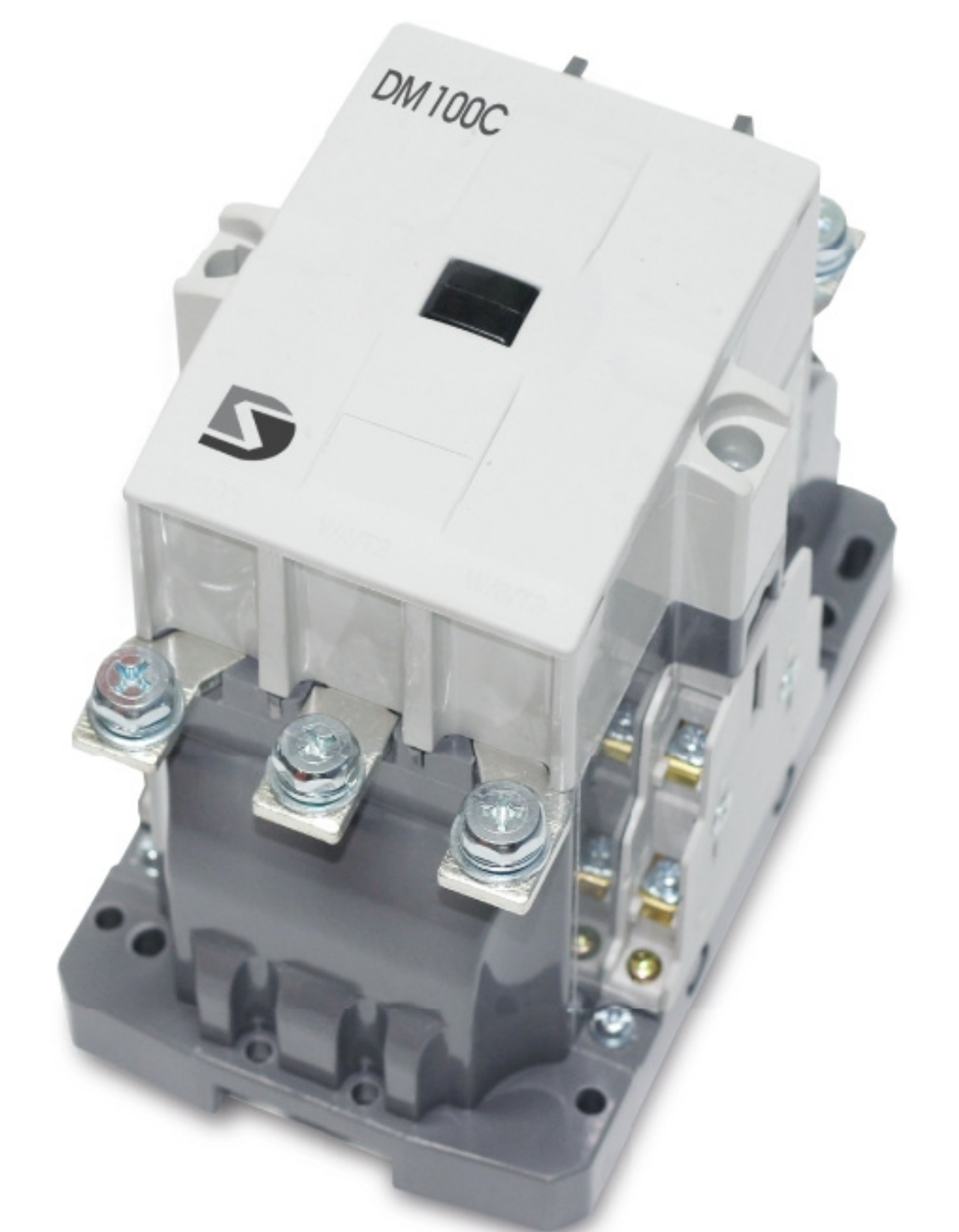
Rating

MODEL			DM-32C	DM-40C	DM-48C	
Rating KS C 4504	3-phase squirrel cage motor	AC3-class	200/220V	5.5kW 26A	7.5kW 35A	11kW 48A
			380/440V	11kW 25A	15kW 32A	15kW 35A
			500/550V	11kW 20A	15kW 26A	15kW 28A
		AC4-class	200/220V	4.5kW 20A	5.5kW 25A	7.5kW 30A
			380/440V	7.5kW 17A	11kW 24A	11kW 28A
			100V	1.2kW 26A	1.7kW 35A	—
	Single-phase motor	220V	—	—	—	
		Resistance load (DC1-class)	2-pole serial	110V	25A	25A
	220V			12A	12A	15A
	3-pole serial		110V	25A	35A	50A
			220V	22A	30A	40A
	Thermal current AC 1 class (Ith)			50A	60A	70A
Endurance (x10,000 operations)			Electric	200	200	200
			Mechanical	1500	1500	1500
Auxiliary Contact (standard)			2a2b	2a2b	2a2b	
Auxiliary Contact (accessories)			Side-on	DsAU2		
Mounting			35mm DIN Rail or Holes for screw(M4) fixing			
External dimension (mm) (width x length x height)			68X82X94.4			
Installation size (mm) (width x length)			30~35X48~60/35X60			



Rating

MODEL			DM-100C	DM-125C	DM-150C	
Rating KS C 4504	3-phase squirrel cage motor	AC3-class	200/220V	25kW 100A	30kW 125A	37kW 150A
			380/440V	50kW 100A	60kW 120A	75kW 150A
			500/550V	55kW 80A	60kW 90A	90kW 140A
		AC4-class	200/220V	19kW 80A	22kW 93A	30kW 125A
			380/440V	37kW 75A	45kW 90A	55kW 110A
			100V	—	—	—
	Single-phase motor	220V	—	—	—	
		Resistance load (DC1-class)	2-pole serial	110V	80A	80A
	220V			50A	50A	100A
	3-pole serial		110V	100A	100A	150A
			220V	80A	80A	150A
	Thermal current AC 1 class (Ith)			150A	150A	200A
Endurance (x10,000 operations)			Electric	100	100	100
			Mechanical	500	500	500
Auxiliary Contact (standard)			2a2b	2a2b	2a2b	
Auxiliary Contact (accessories)			Side-on	—		
Mounting			35mm DIN Rail or Holes for screw(M4) fixing			
External dimension (mm) (width x length x height)			100X157.4X146.5			
Installation size (mm) (width x length)			80X100/90X125			



Magnetic Contactor/Auxiliary contact

DS Electric

Rating



MODEL		DsMC 20		DsMC 25		DM-22D		DM-32D		DM-40D			
Contact point organization		2A	3A, 2A1b	2A	3A, 2A1b	2A	3A, 2A1b	2A	3A, 2A1b	2A	3A, 2A1b		
Thermal current(Ith)(A)		30		40		40		50		50			
Rated AC3-Class current(A)	AC 220V	20		25		22		32		40			
	AC 440V	17		21		22		32		40			
Capacity of maximum adopted motor (kW)	1ø 110V	0,9		1,2		0,9		1,2		1,7			
	1ø 220V	1,8		2,2		1,8		-		-			
	3ø 220V	4		5,5		4		5,5		7,5			
Standard coil voltage (VAC)		24~550 (10 types)						24~550 (10 types)					
Weight(Kg)		2A : 0,23, 3A, 2A1b : 0,25						2A : 0,36, 3A, 2A1b : 0,38					

Auxiliary contact

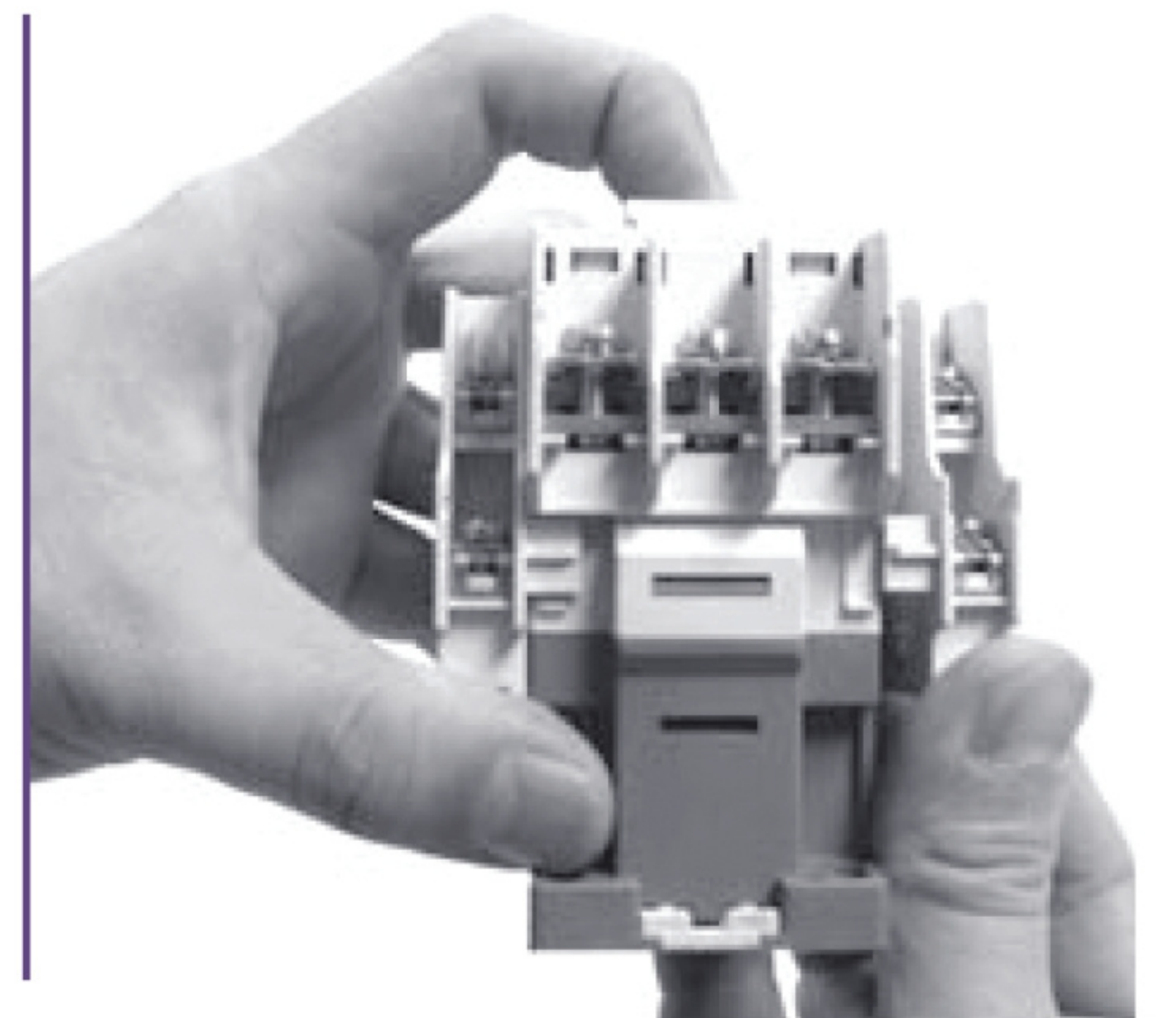


Rating

TYPE	Side-On
Model	DsAU 2
Number of poles	2
Contact point organization	1a 1b
Combined Magnetic contactor	DM-9 ~ 48C DM-50 ~ 85C

DsAU 2 Installation and Demolition Method

- ▶ With Crossbar of Magnetic Contactor pressed by 3 to 4 mm, align the protrusion of the "DsAU2" unit with the groove of Crossbar, and then assemble it by pushing it.
- ▶ Use the "-" screwdriver to remove the "DsAU2" unit.



Contact Ratings

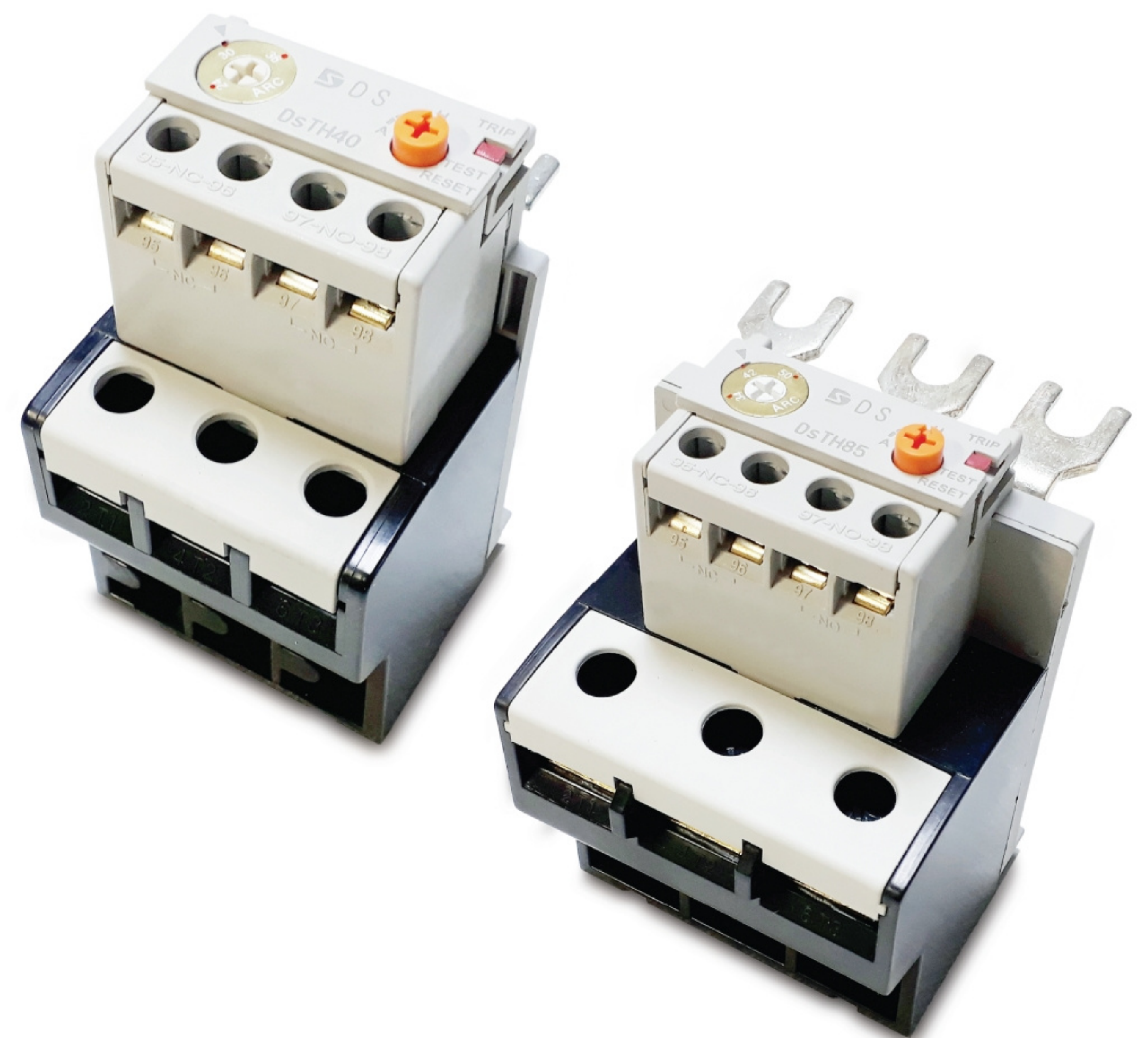
Model	Rated operational current(A)																Rated thermal current (Ith) A
	AC15 duty (Inductive load)				DC13 duty (Inductive load)				AC12 duty (Resistance load)				DC12 duty (Resistance load)				
	110V	220V	440V	550V	24V	48V	110V	220V	110V	220V	440V	550V	24V	48V	110V	220V	
Side-on DsAU 2	6	3	1,5	1,2	3	1,5	11	0,55	10	8	5	5	5	3	2,5	1	16

Performance

Model	Operation cycles / hour	Mechanical lifetime (mil. operations)	Electrical lifetime (mil. operations)				
			AC15 duty		AC12 duty		AC12, 13 duty
			220V	440V	220V	440V	24V~220V
DsAU 2	1,800	2,000	50	50	25	25	50

Feature of Overload Relay

Overload Relay protects the motor from Overload, Open Phase(differential), and Locking, and is also suitable for loads with long operating times.



► Combinable magnetic contactor

Magnetic contactor	DM9, 12, 18, 22C	DM32, 40, 48C	DM50, 65, 75, 85C
Overload realy	DsTH22	DsTH40	DsTH85

► Auxiliary contact rating

Model	Rated operational current (A)				
	AC15			DC13	
	110V	220V	550V	110V	220V
DsTH22, 40, 85	1,6	0,8	0,3	0,28	0,14










Type	Model	DsTH22			DsTH40			DsTH85		
	Nominal rating	Setting range			Setting range			Setting range		
		Min	Mid	Max	Min	Mid	Max	Min	Mid	Max
Rated current(A)	2,1	1,6	2,1	2,5						
	3,3	2,5	3,3	4						
	5	4	5	6						
	6,5	5	6,5	8						
	7,5	6	7,5	9						
	8,5	7	8,5	10						
	11	9	11	13						
	15	12	15	18						
	19	16	19	22						
	22				18	22	26			
	30				24	30	36			
	34				28	34	40			
	42							34	42	50
	55							45	55	65
	65							54	65	75
74							63	74	85	
The number of elements	3-heater	Standard			Standard			Standard		
Auxiliary contact		1a1b			1a1b			1a1b		
Reset mode		Manual/Automatic reset			Manual/Automatic reset			Manual/Automatic reset		
Consuming electricity		1.8VA / pole			2.0VA / pole			3.5VA / pole		
External dimensions(mm) (W x H x D)		43X72X90,5			54X75,5X92			70X87X102,5		
Combined Magnetic contactor		DM9, 12, 18, 22C			DM32, 40, 48C			DM50, 65, 75, 85C		
Combined Magnetic switch		DM9, 12, 18, 22S			DM32, 40, 48S			DM50, 65, 75, 85S		

Electronic Overload Relay

DS Electric

Rating

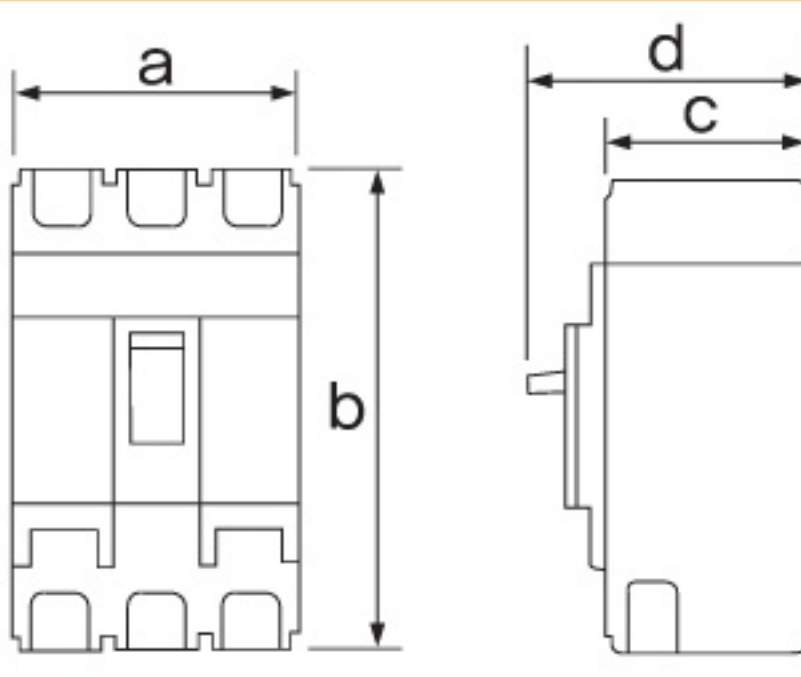
Appearance								
Connection method	Pin(Directly to MC)	Pin(Directly to MC)	Pin(Directly to MC)	Terminal (Wire)	2 Hole(Wire-Through)	2 Hole(Wire-Through)	3 Hole(Wire-Through)	
Model	SP (Old, SP)	EP (Old, EP)	EP-50 (Old, EP-50)	ES (Old, ES)	SS2E (Old, ES2)	SS2 (Old, SS)	SS3 (Old, SS3)	
Protection	Over-current	Over-current	Over-current	Over-current	Over-current	Over-current	Over-current	
Current setting range (A) ±10%	1 0.1~1A 6 0.5~6.5A 10 0.5~10A 20 1~20A 30 1.5~30A	1 0.1~1A 6 0.5~6.5A 10 0.5~10A 30 1.5~30A	50 5~50A 60 6~60A	1 0.1~1A 6 0.5~6.5A 10 0.5~10A 30 1.5~30A 50 5~50A	6 0.5~6.5A 10 0.5~10A 30 1.5~30A 60 6~60A 90 9~90A 120 12~120A	6 0.5~6.5A 10 0.5~10A 30 1.5~30A 60 6~60A 90 9~90A 120 12~120A	6 0.5~6.5A 10 0.5~10A 30 1.5~30A 60 6~60A 90 9~90A 120 12~120A	
Operating Power ±10% 50 / 60 Hz	12 AC/DC 12V 24 AC/DC 24V 48 AC 48V 220 AC100~240V 440 AC220~440V	12 AC/DC 12V 24 AC/DC 24V 48 AC 48V 220 AC100~240V 440 AC220~440V	12 AC/DC 12V 24 AC/DC 24V 48 AC 48V 220 AC100~240V 440 AC220~440V	12 AC/DC 12V 24 AC/DC 24V 48 AC 48V 220 AC100~240V 440 AC220~440V	12 AC/DC 12V 24 AC/DC 24V 48 AC 48V 220 AC100~240V 440 AC220~440V	12 AC/DC 12V 24 AC/DC 24V 48 AC 48V 220 AC100~240V 440 AC220~440V	12 AC/DC 12V 24 AC/DC 24V 48 AC 48V 220 AC100~240V 440 AC220~440V	12 AC/DC 12V 24 AC/DC 24V 48 AC 48V 220 AC100~240V 440 AC220~440V
Time setting range (sec) ±10%	O-Time : 0~10 s	O-Time : 0~10 s	O-Time : 0~10 s	O-Time : 0~10 s	O-Time : 0~10 s	D-Time : 0~30 s O-Time : 0~10 s	D-Time : 0~30 s O-Time : 0~10 s	
Operating Time Spec	Definite	Definite	Definite	Definite	Definite	Definite	Definite	
Reset	Manual Automatic	Manual Automatic	Manual Automatic	Manual Automatic	Manual Automatic	Manual Automatic	Manual Automatic	
Aux. contact	R:De-Energized N:Energized 1C(SPDT) AC 250V 5A	R:De-Energized N:Energized 1C(SPDT) AC 250V 5A	R:De-Energized N:Energized 1C(SPDT) AC 250V 5A	R:De-Energized N:Energized 1C(SPDT) AC 250V 5A	R:De-Energized N:Energized 1C(SPDT) AC 250V 5A	R:De-Energized N:Energized 1C(SPDT) AC 250V 5A	R:De-Energized N:Energized 1C(SPDT) AC 250V 5A	
No. of CT	2CT R, T Phase 3CT R,S,T Phase	2CT R, T Phase 3CT R,S,T Phase	2CT R, T Phase 3CT R,S,T Phase	2CT R, T Phase 3CT R,S,T Phase	2CT R, T Phase	2CT R, T Phase	2CT R, T Phase 3CT R,S,T Phase	
Protection Functions	Over-current ○ Phase loss ○ Locked rotor ○	Over-current ○ Phase loss ○ Locked rotor ○	Over-current ○ Phase loss ○ Locked rotor ○	Over-current ○ Phase loss ○ Locked rotor ○	Over-current ○ Phase loss ○ Locked rotor ○	Over-current ○ Phase loss ○ Locked rotor ○	Over-current ○ Phase loss ○ Locked rotor ○	
L Green LED light up G Green LED O Orange LED Y Yellow LED R Red LED	G : Operation O : Over-current R : Trip	G : Operation O : Over-current R : Trip	G : Operation O : Over-current R : Trip	G : Operation O : Over-current R : Trip	G : Operation O : Over-current R : Trip	L : D-time G : Operation O : Over-current R : Trip	L : D-time G : Operation O : Over-current R : Trip	
Setting	Screw	Screw	Screw	Screw / DIN RAIL (35mm)	Screw / DIN RAIL (35mm)	Screw / DIN RAIL (35mm)	Screw / DIN RAIL (35mm)	
Contact	2/T1 4/T2 6/T3 L1 L2 COM NC NO A1 A2 95 96 98	2/T1 4/T2 6/T3 A3 L1 L2 NO NC COM A1 A2 98 96 95	2/T1 4/T2 6/T3 L1 L2 NO NC COM A1 A2 98 96 95	2/T1 4/T2 6/T3 A3 L1 L2 NO NC COM A1 A2 98 96 95	L1 L2 COM NC NO A1 A2 95 96 98	L1 L2 COM NC NO A1 A2 95 96 98	L1 L2 COM NC NO A1 A2 95 96 98	

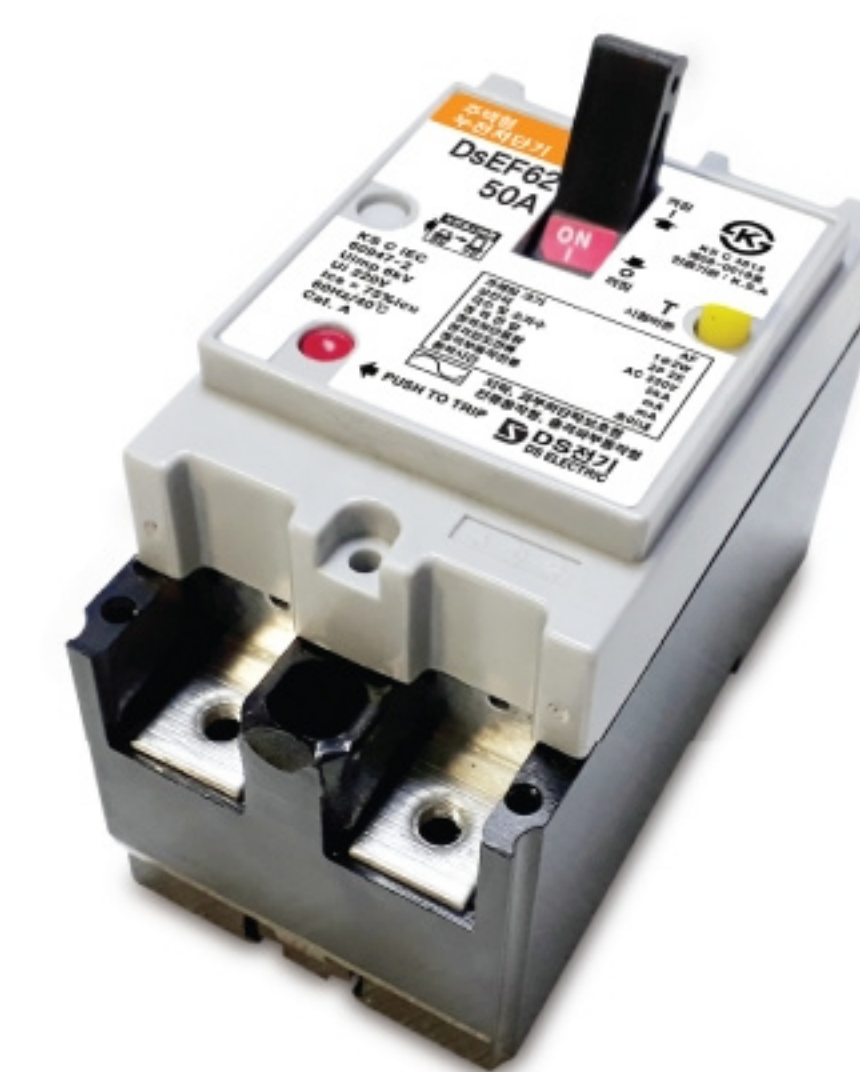
Circuit Breakers (MCB/RCBO)

DS Electric

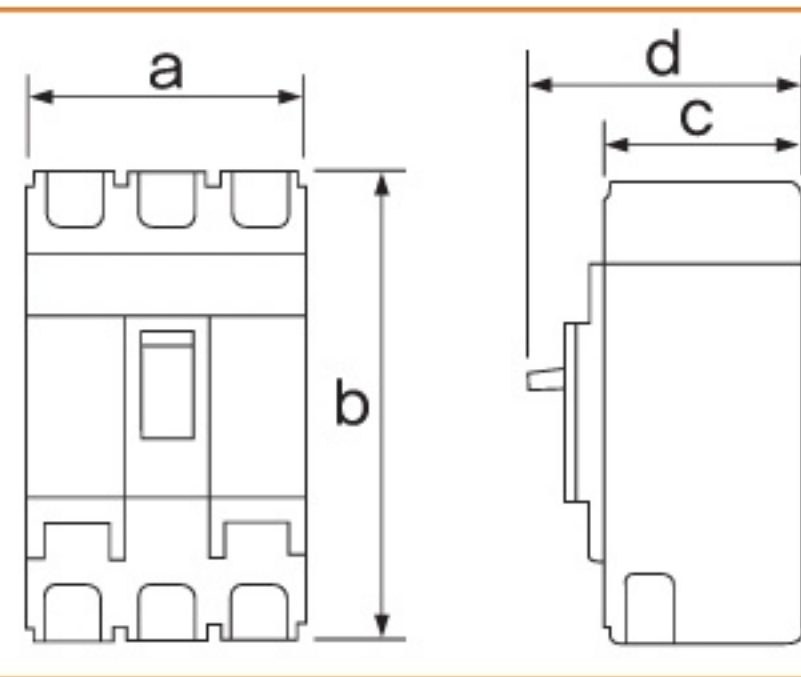


Rating

SERIES (MCB)		DsBM	DsBF					
Frame size		30AF	30AF		50AF	60AF		
Type		DsBM 32	DsBF 32	DsBF 33	DsBF 52	DsBF 53	DsBF 62	DsBF 63
Number of poles		2P 2E	2P 2E	3P 3E	2P 2E	3P 3E	2P 2E	3P 3E
Rated	Rated current(I _n) A	16, 20, 32	16, 20, 32		16, 20, 32, 40, 50		63	
	Rated operational voltage(U _e) VAC	220	220	380	220	380	220	380
	I _{cs} [%I _{cu}]	100	100		100		100	
Rated impulse withstand voltage(U _{imp})		4	4		4		4	
Instantaneous release type		D	C		C		C	
Rated break current (kA)	AC 380V	-	-	5	-	5	-	5
	AC 220V	2.5	5	-	5	-	5	-
	a	33	50	75	50	75	50	75
	b	70	96		96		96	
	c	42	60		60		60	
	d	59	80		80		80	
Terminal Type		Lug terminal type	Screw terminal type		Screw terminal type		Screw terminal type	



Rating

SERIES (RCBO)		DsEM	DsEF					
Frame size		30AF	30AF		50AF	60AF		
Type		DsEM 32	DsEF 32	DsEF 33	DsEF 52	DsEF 53	DsEF 62	DsEF 63
Number of poles		2P 2E	2P 2E	3P 3E	2P 2E	3P 3E	2P 2E	3P 3E
Rated	Rated current(I _n) A	16, 20, 32	16, 20, 32		16, 20, 32, 40, 50		63	
	Rated sensitive current	15, 30	15, 30		15, 30		15, 30	
	Rated operational voltage(U _e) VAC	220	220	380	220	380	220	380
	I _{cs} [%I _{cu}]	100	100		100		100	
Rated impulse withstand voltage(U _{imp})		4	4		4		4	
Instantaneous release type		D	C		C		C	
Rated break current (kA)	AC 380V	-	-	5	-	5	-	5
	AC 220V	2.5	5	-	5	-	5	-
	a	33	50	75	50	75	50	75
	b	70	96		96		96	
	c	42	60		60		60	
	d	59	80		80		80	
Terminal Type		Lug terminal type	Screw terminal type		Screw terminal type		Screw terminal type	

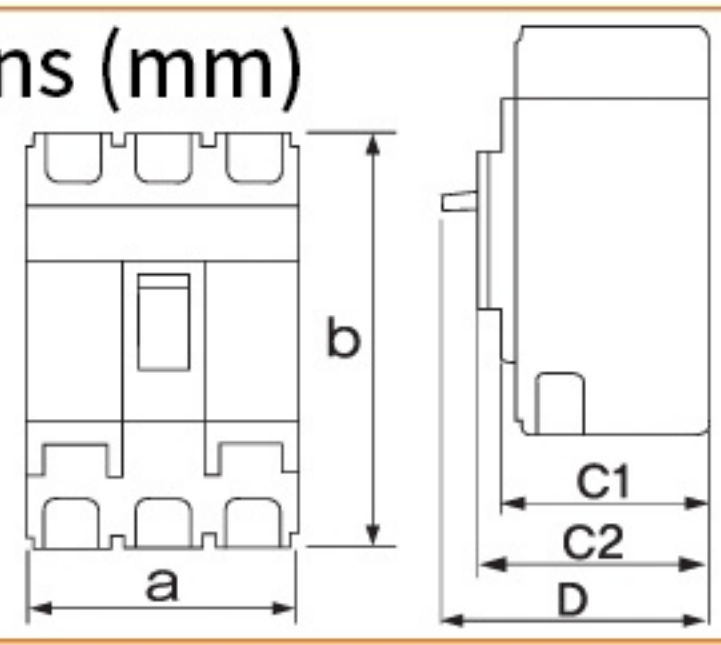
Circuit Breakers (MCCB)

DS Electric

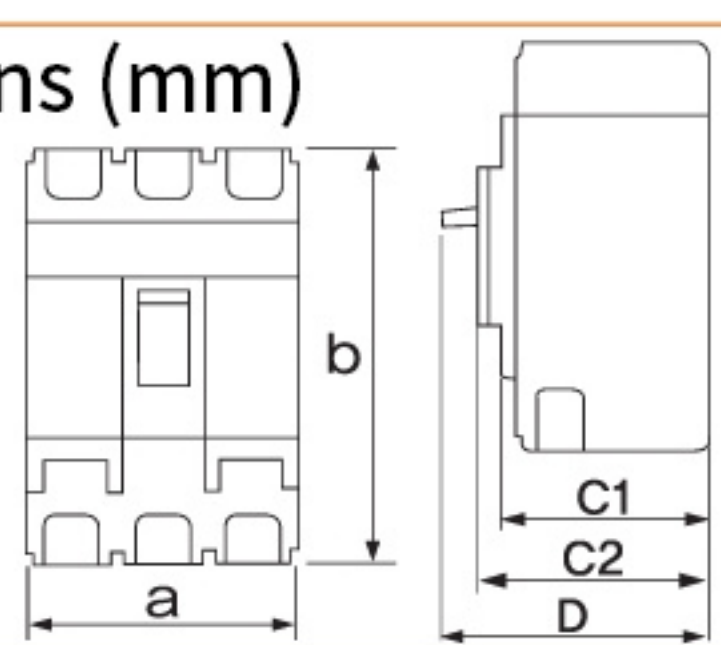
Rating



Frame size		30AF						50AF		60AF	
Model		DsB32La	DsB32Lb	DsB32Ka	DsB32Kb	DsB32Sa	DsB32Sb	DsB52F	DsB53F	DsB62F	DsB63F
Number of poles		2	2	2	2	2	2	2	3	2	3
Rated current(In) A		15, 20, 30		15, 20, 30		15, 20, 30		15, 20, 30, 40, 50		60	
Rated voltage(Ue) AC(V)		220	220	220	220	220	220	220	460	220	460
Rated insulation voltage(Ui) V		300	300	300	300	300	300	690	690	690	690
Rated impulse withstand voltage(Uimp) kV		4	4	4	4	4	4	4	4	4	4
Rated short-circuit breaking capacity(kA) KS C 8321(Sym) IEC60947-2(lcu) lcs=Q5lcu	AC	600V	-	-	-	-	-	-	-	-	-
		460V	-	-	-	-	-	-	5	-	5
		380V	-	-	-	-	-	-	-	-	-
		220V	1,5	2,5	1,5	2,5	1,5	2,5	5	-	5
-		10~20In	10~20In	10~20In	10~20In	10~20In	10~20In	10~20In	10~20In	10~20In	10~20In
Endurance	Mechanical	8,500	8,500	8,500	8,500	8,500	8,500	8,500	8,500	8,500	8,500
	Electrical	1,500	1,500	1,500	1,500	1,500	1,500	1,500	1,500	1,500	1,500
Dimensions (mm)	A	32	32	64.4	64.4	32	32	50	75	50	75
	B	70	70	70.8	70.8	70	70	96	96	96	96
	C1	36	36	37	37	42	42	60	60	60	60
	C2	38	38	39	39	45	45	65	65	65	65
	D	50.5	50.5	52.5	52.5	57	57	79.7	79.7	79.7	79.7
Weight (Kg)		0.1		0.1		0.1		0.3	0.4	0.3	0.4
Type of trip unit		Thermal-Magnetic		Thermal-Magnetic		Thermal-Magnetic		Hydraulic-Magnetic		Hydraulic-Magnetic	
Connection	Standard	<input type="radio"/>	<input type="radio"/>	<input type="radio"/>	<input type="radio"/>	<input type="radio"/>	<input type="radio"/>	<input type="radio"/>	<input type="radio"/>	<input type="radio"/>	<input type="radio"/>
	Optional	<input type="radio"/>	<input type="radio"/>	<input type="radio"/>	<input type="radio"/>	<input type="radio"/>	<input type="radio"/>	<input type="radio"/>	<input type="radio"/>	<input type="radio"/>	<input type="radio"/>
Mounting		Screw fixing	Screw fixing	Screw fixing	Screw fixing	Screw fixing	Screw fixing	Screw fixing Din Rail	Screw fixing Din Rail	Screw fixing Din Rail	Screw fixing Din Rail
Certification	Safety Certi	<input type="radio"/>	<input type="radio"/>	<input type="radio"/>	<input type="radio"/>	<input type="radio"/>	<input type="radio"/>	<input type="radio"/>	<input type="radio"/>	<input type="radio"/>	<input type="radio"/>
	KS C 8321	<input type="radio"/>	<input type="radio"/>	<input type="radio"/>	<input type="radio"/>	<input type="radio"/>	<input type="radio"/>	<input type="radio"/>	<input type="radio"/>	<input type="radio"/>	<input type="radio"/>



Frame size		100AF				225AF				
Model		DsB102F	DsB103F	DsB102	DsB103	DsB104	DsB202	DsB203	DsB204	
Number of poles		2	3	2	3	4	2	3	4	
Rated current(In) A		60, 75, 100		15, 20, 30, 40, 50, 60, 75, 100		125, 150, 175, 200, 225				
Rated voltage(Ue) AC(V)		220	460	220	460	460	220	460	460	
Rated insulation voltage(Ui) V		690	690	690	690	690	690	690	690	
Rated impulse withstand voltage(Uimp) kV		4	4	6	6	6	6	6	6	
Rated short-circuit breaking capacity(kA) KS C 8321(Sym) IEC60947-2(lcu) lcs=Q5lcu	AC	600V	-	-	-	-	-	-	-	
		460V	-	5	-	14	14	-	25	25
		380V	-	-	-	-	-	-	-	-
		220V	5	-	25	-	-	35	-	-
-		10~20In	10~20In	10~20In	10~20In	10~20In	10~20In	10~20In	10~20In	
Endurance	Mechanical	8,500	8,500	8,500	8,500	8,500	7,000	7,000	7,000	
	Electrical	1,500	1,500	1,500	1,500	1,500	1,000	1,000	1,000	
Dimensions (mm)	A	50	75	50	75	100	104	104	104	
	B	96	96	130	130	130	165	165	165	
	C1	60	60	60	60	60	60.4	60.4	60.4	
	C2	65	65	67	67	67	67.8	67.8	67.8	
	D	79.7	79.7	80	80	80	84	84	84	
Weight (Kg)		0.4	0.4	0.5	0.6	0.8	0.9	1.1	1.4	
Type of trip unit		Hydraulic-Magnetic		Hydraulic-Magnetic						
Connection	Standard	<input type="radio"/>	<input type="radio"/>	<input type="radio"/>	<input type="radio"/>	<input type="radio"/>	<input type="radio"/>	<input type="radio"/>	<input type="radio"/>	
	Optional	<input type="radio"/>	<input type="radio"/>	<input type="radio"/>	<input type="radio"/>	<input type="radio"/>	<input type="radio"/>	<input type="radio"/>	<input type="radio"/>	
Mounting		Screw fixing Din Rail	Screw fixing Din Rail	Screw fixing	Screw fixing	Screw fixing	Screw fixing	Screw fixing	Screw fixing	
Certification	Safety Certi	<input type="radio"/>	<input type="radio"/>	<input type="radio"/>	<input type="radio"/>	<input type="radio"/>	<input type="radio"/>	<input type="radio"/>	<input type="radio"/>	
	KS C 8321	<input type="radio"/>	<input type="radio"/>	<input type="radio"/>	<input type="radio"/>	<input type="radio"/>	<input type="radio"/>	<input type="radio"/>	<input type="radio"/>	



Circuit Breakers (ELCB)

DS Electric

Rating



Frame size		30AF						50AF		60AF		
Model		DsE32La	DsE32Lb	DsE32Ka	DsE32Kb	DsE32ha	DsE32hb	DsE52F	DsE53F	DsE62F	DsE63F	
-		1Φ2W	1Φ2W	1Φ2W	1Φ2W	1Φ2W	1Φ2W	1Φ2W	3Φ3W	1Φ2W	3Φ3W	
Number of poles		2P 2E		2P 2E		2P 2E		2P 2E	3P 3E	2P 2E	3P 3E	
Types of the protection		Overload, short-circuit and ground fault						Overload, short-circuit and ground fault				
Rated voltage(Ue)		V	220	220	220	220	220	220	460	220	460	
Rated impulse withstand voltage(Uimp)		kV	4	4	4	4	4	4	6	6	6	
Rated current(In)		A	15, 20, 30		15, 20, 30		15, 20, 30		15, 20, 30, 40, 50		60	
Rated sensitive current		mA	15, 30	15, 30	15, 30	15, 30	15, 30	15, 30	15, 30	15, 30	15, 30	
Operating time		sec	within 0.03		within 0.03		within 0.03		within 0.03		within 0.03	
Rated short-circuit breaking capacity(kA) KS C 4613(Sym)		AC	460/415V	—	—	—	—	—	5	—	5	
			240/220V	1.5	2.5	1.5	2.5	1.5	2.5	5	—	5
			Ics = % X Icu	50	50	50	50	50	50	75	75	75
-			10~20In	10~20In	10~20In	10~20In	10~20In	10~20In	10~20In	10~20In	10~20In	
Endurance		Mechanical	8,500	8,500	8,500	8,500	8,500	8,500	8,500	8,500	8,500	
		Electrical	1,500	1,500	1,500	1,500	1,500	1,500	1,500	1,500	1,500	
Dimensions (mm) 		A	32	32	64.4	64.4	32	32	50	75	50	75
		B	70	70	70.8	70.8	70	70	96	96	96	96
		C1	36	36	37	37	42	42	60	60	60	60
		C2	38	38	39	39	45	45	65	65	65	65
		D	50.5	50.5	52.5	52.5	57	57	79.7	79.7	79.7	79.7
Weight (Kg)			0.1		0.1		0.1		0.3	0.5	0.3	0.5
Type of trip unit			Thermal-Magnetic						Hydraulic-Magnetic			
Connection		Standard	○	○	○	○	○	○	○	○	○	○
		Optional	○	○	○	○	○	○	○	○	○	○
Mounting			Screw fixing	Screw fixing	Screw fixing	Screw fixing	Screw fixing	Screw fixing	Screw fixing	Screw fixing	Screw fixing	
Certification		Safety Certi	○	○	○	○	○	○	○	○	○	○
		KS C 4613	○	○	○	○	○	○	○	○	○	○



Frame size		100AF					225AF				
Model		DsE102F	DsE103F	DsE102	DsE103	DsE104	DsE202	DsE203	DsE204		
-		1Φ2W	3Φ3W	1Φ2W	3Φ3W	3Φ4W	1Φ2W	3Φ3W	3Φ4W		
Number of poles		2P 2E	3P 3E	2P 2E	3P 3E	4P 3E	2P 2E	3P 3E	4P 3E		
Types of the protection		Overload, short-circuit and ground fault					Overload, short-circuit and ground fault				
Rated voltage(Ue)		V	220	460	220	460	460	220	460	460	
Rated impulse withstand voltage(Uimp)		kV	6	6	6	6	6	6	6	6	
Rated current(In)		A	60, 75, 100		15, 20, 30, 40, 50, 60, 75, 100			125, 150, 175, 200, 225			
Rated sensitive current		mA	15, 30	15, 30	100	100	100	100 / 200 / 500			
Operating time		sec	within 0.03		within 0.01			within 0.01			
Rated short-circuit breaking capacity(kA) KS C 4613(Sym)		AC	460/415V	—	5	—	14	14	—	18	18
			240/220V	5	—	25	—	—	35	—	—
			Ics = % X Icu	75	75	50	50	50	50	50	50
-			10~20In	10~20In	10~20In	10~20In	10~20In	8~16In	8~16In	8~16In	
Endurance		Mechanical	8,500	8,500	8,500	8,500	8,500	7,000	7,000	7,000	
		Electrical	1,500	1,500	1,500	1,500	1,500	1,000	1,000	1,000	
Dimensions (mm) 		A	50	75	75	75	100	105	105	140	
		B	95	96	130	130	130	165	165	165	
		C1	60	60	60	60	60	60	60	60	
		C2	65	65	67	67	67	68	68	68	
		D	79.7	79.7	80	80	80	84	84	84	84
Weight (Kg)			0.5	0.5	0.67	0.67	0.9	1.2	1.3	1.5	
Type of trip unit			Hydraulic-Magnetic			Hydraulic-Magnetic					
Connection		Standard	○	○	○	○	○	○	○	○	
		Optional	○	○	○	○	○	○	○	○	
Mounting			Screw fixing	Screw fixing	Screw fixing	Screw fixing	Screw fixing	Screw fixing	Screw fixing	Screw fixing	
Certification		Safety Certi	○	○	○	○	○	○	○	○	
		KS C 4613	○	○	○	○	○	○	○	○	

DS Electric



80-3, Jangnim-ro, Saha-gu, Busan, Republic of Korea

Tel : 82+ 51-996-0411 Fax : 82+ 51-996-0418

E-mail : dsemc@daum.net

<http://dselectric.kr>

